



31'

FIELDGATEHOMES.COM



31'

UPPER EAST SIDE
UNIONVILLE

MEADOWVIEW

ELEV A • 1541 SQ. FT. • W/SECONDARY SUITE 2189 SQ. FT.

ELEV B • 1541 SQ. FT. • W/SECONDARY SUITE 2189 SQ. FT.



FIELDGATEHOMES.COM



FIELDGATEHOMES.COM



31'

FIELDGATEHOMES.COM



FIELDGATEHOMES.COM

31'

UPPER EAST SIDE
UNIONVILLE

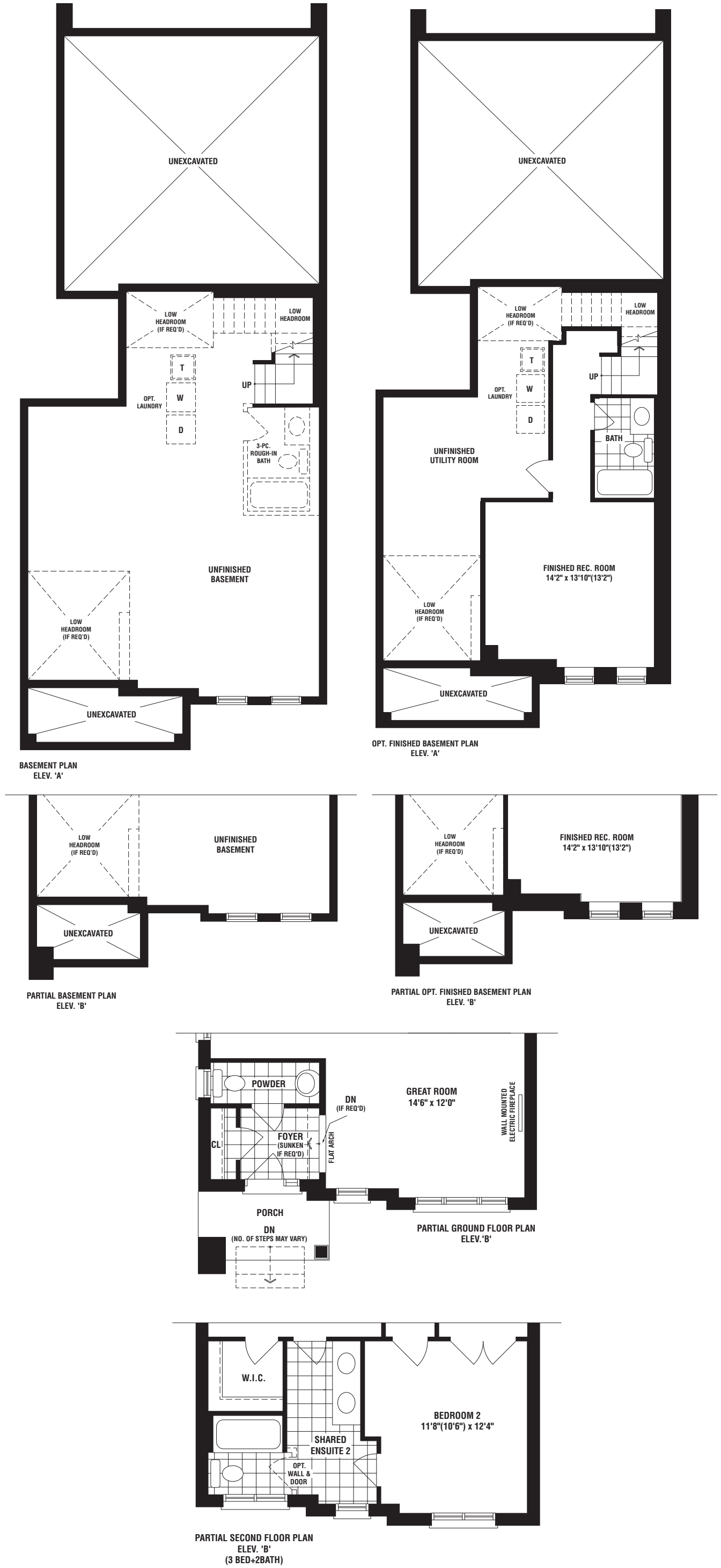
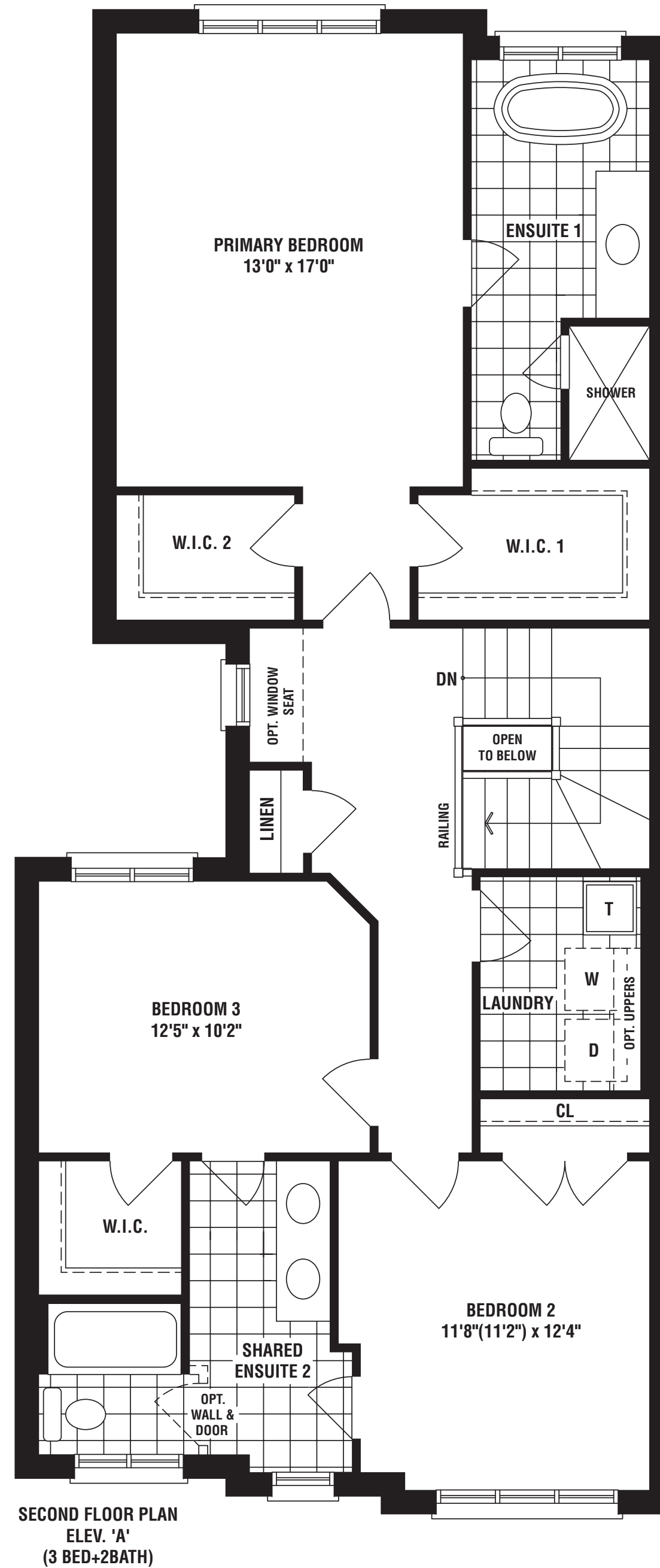
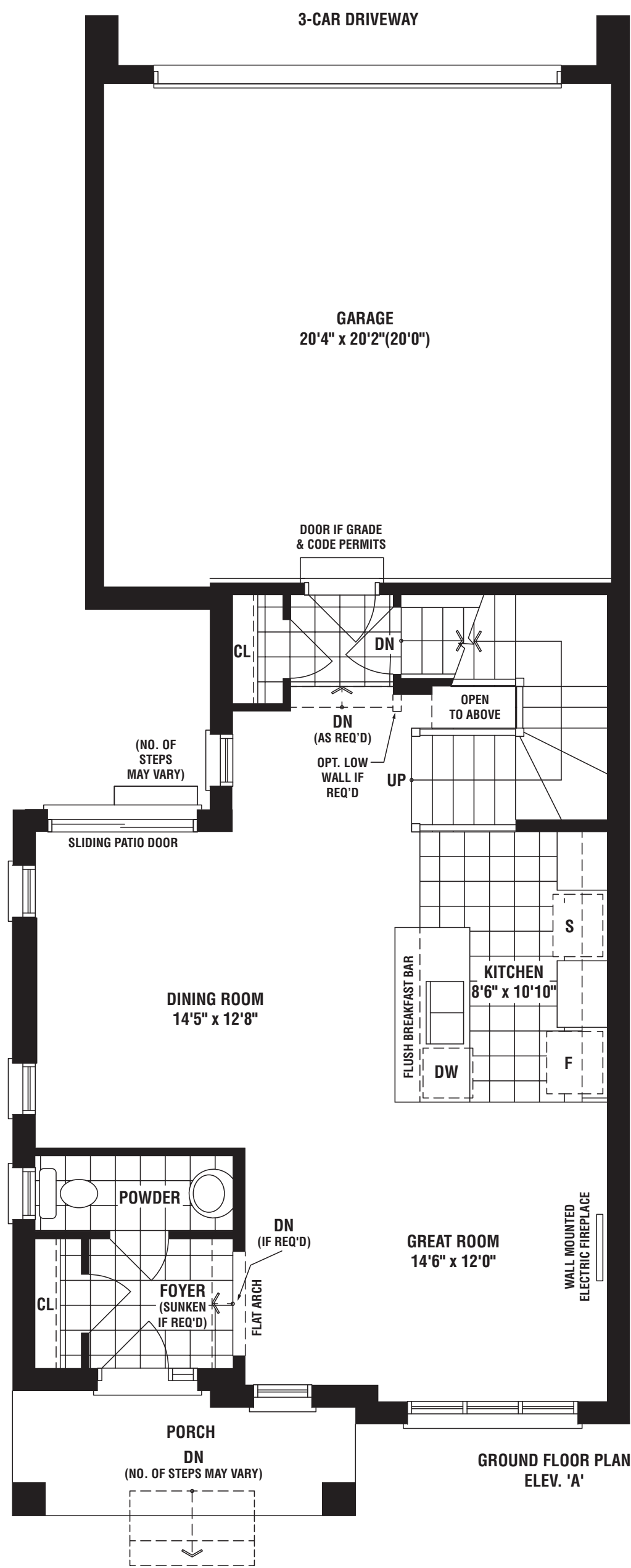
FORESTVIEW

ELEV A • 1987 SQ. FT.

ELEV B • 1987 SQ. FT.



FIELDGATEHOMES.COM



B



UPPER EAST SIDE
UNIONVILLE

WELLSIDE

ELEV B • 2548 SQ. FT.



OVER 65 YEARS OF EXCELLENCE

31' CITY SINGLES

A



UPPER EAST SIDE
UNIONVILLE

WELLSIDE

ELEV A • 2553 SQ. FT.



OVER 65 YEARS OF EXCELLENCE

31' CITY SINGLES

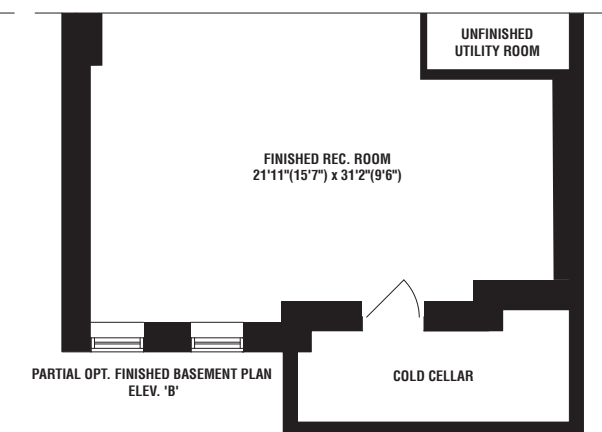
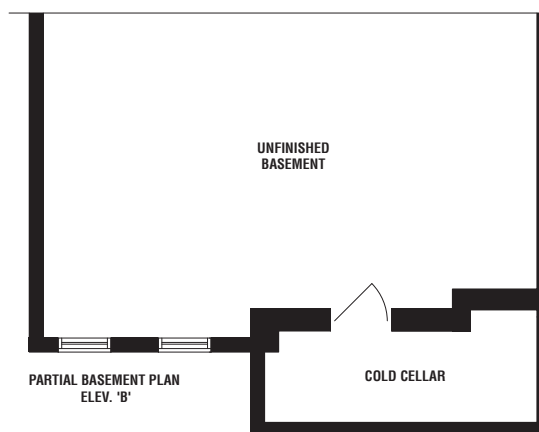
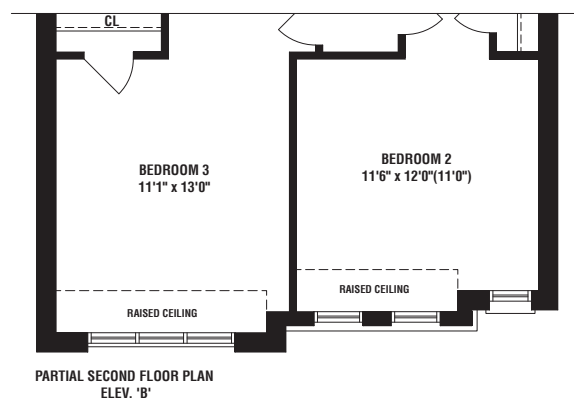
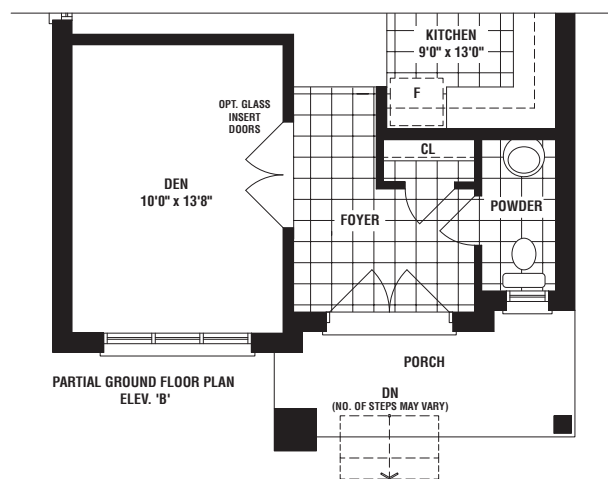
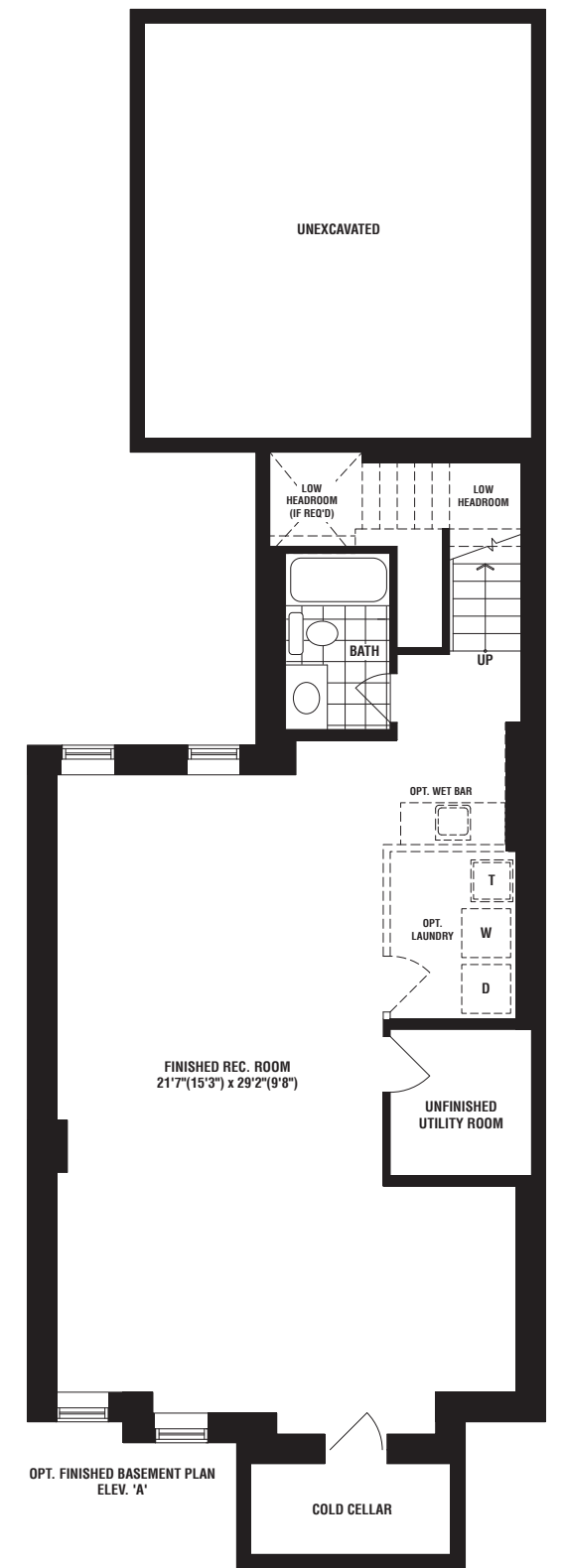
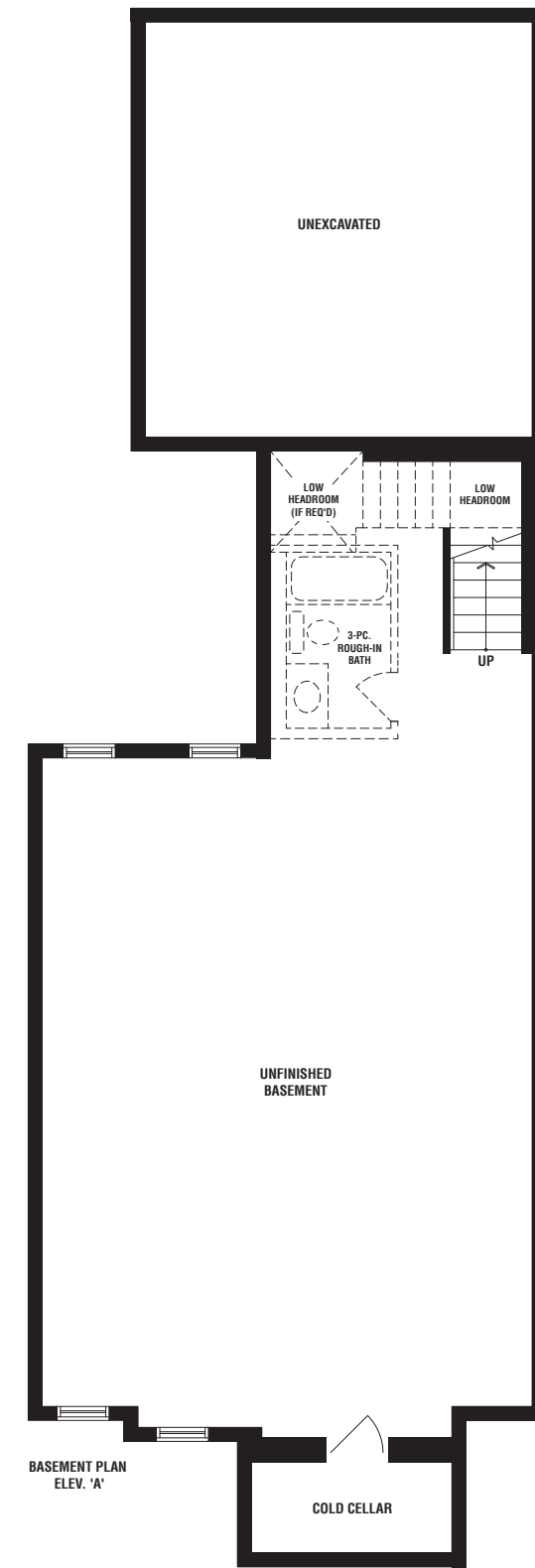
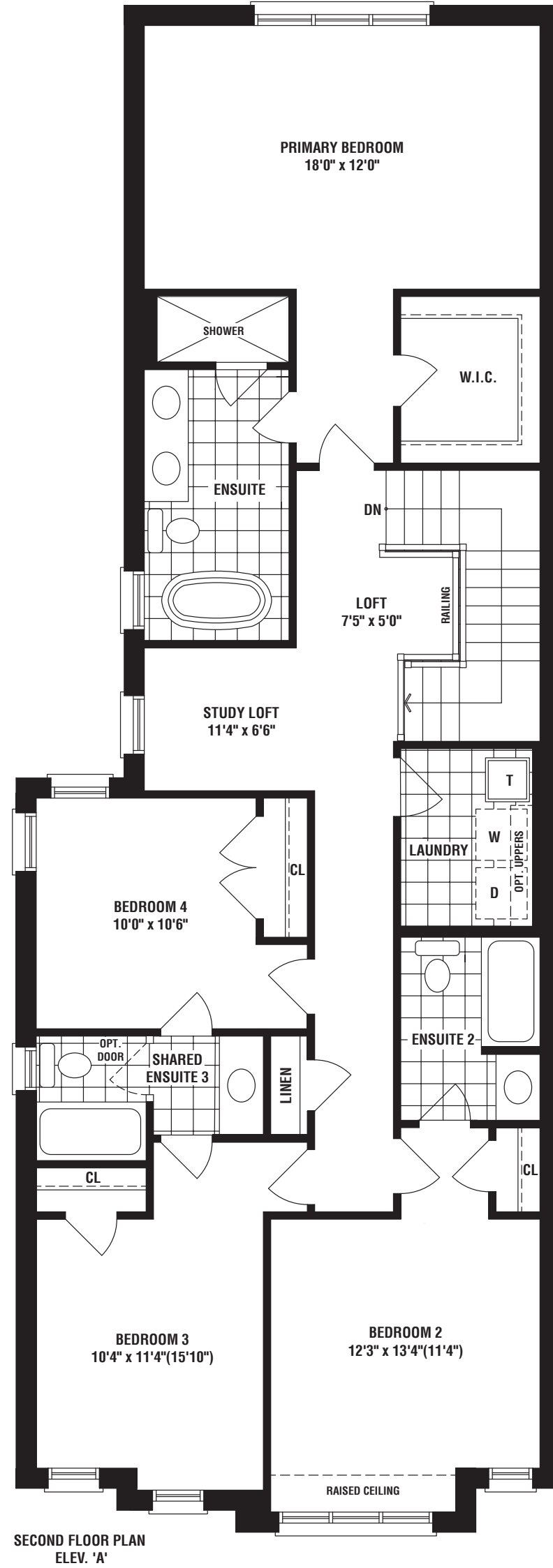
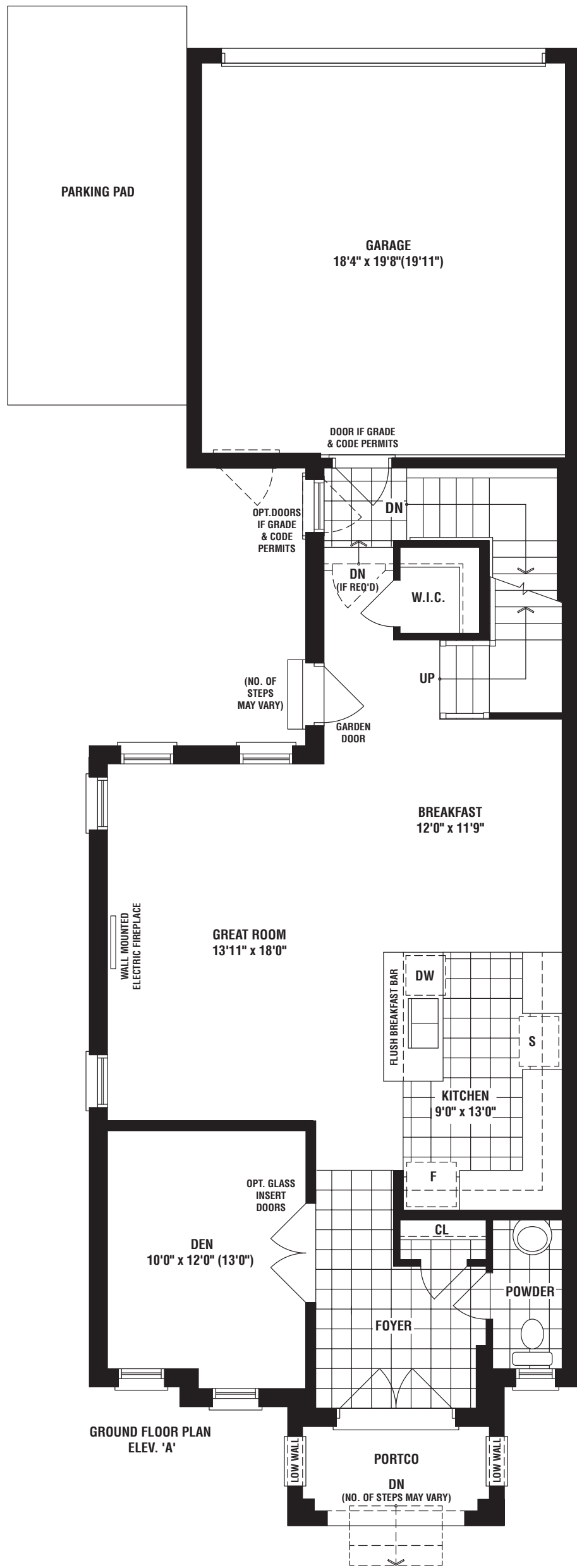
ARTIST CONCEPT

ARTIST CONCEPT

WELLSIDE

ELEV A • 2553 SQ. FT. | ELEV B • 2548 SQ. FT.
 (NOT INCLUDING 836 (ELEV. A) / 834 (ELEV. B) SQ.FT. FINISHED BASEMENT)

31'
 CITY SINGLES



B



UPPER EAST SIDE
UNIONVILLE

BAYSIDE

ELEV B • 2669 SQ. FT.



31' CITY SINGLES

A



UPPER EAST SIDE
UNIONVILLE

BAYSIDE

ELEV A • 2652 SQ. FT.

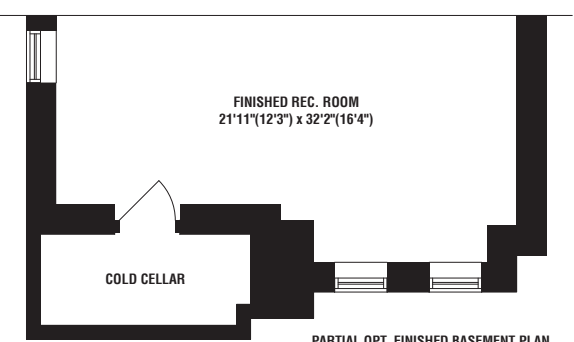
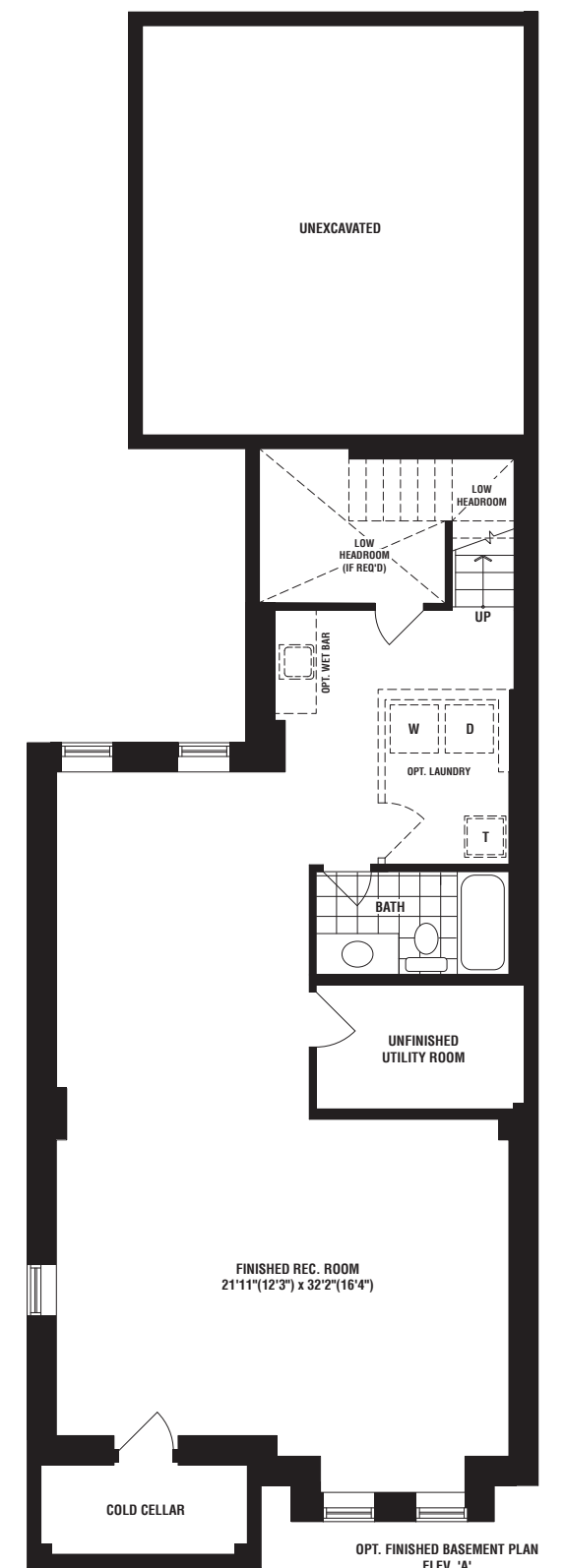
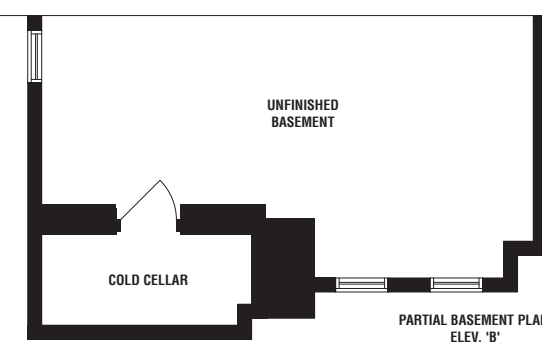
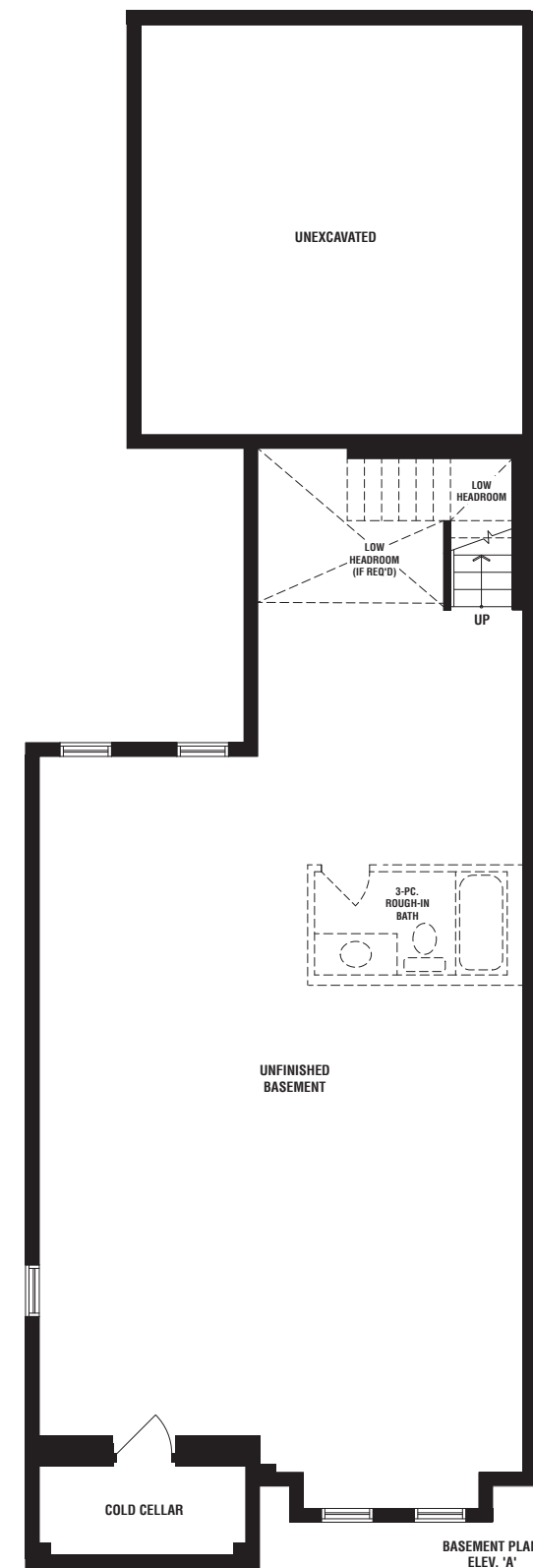
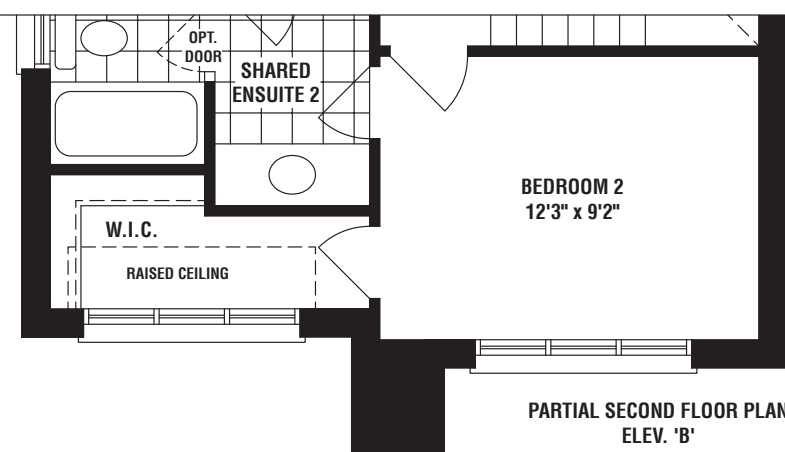
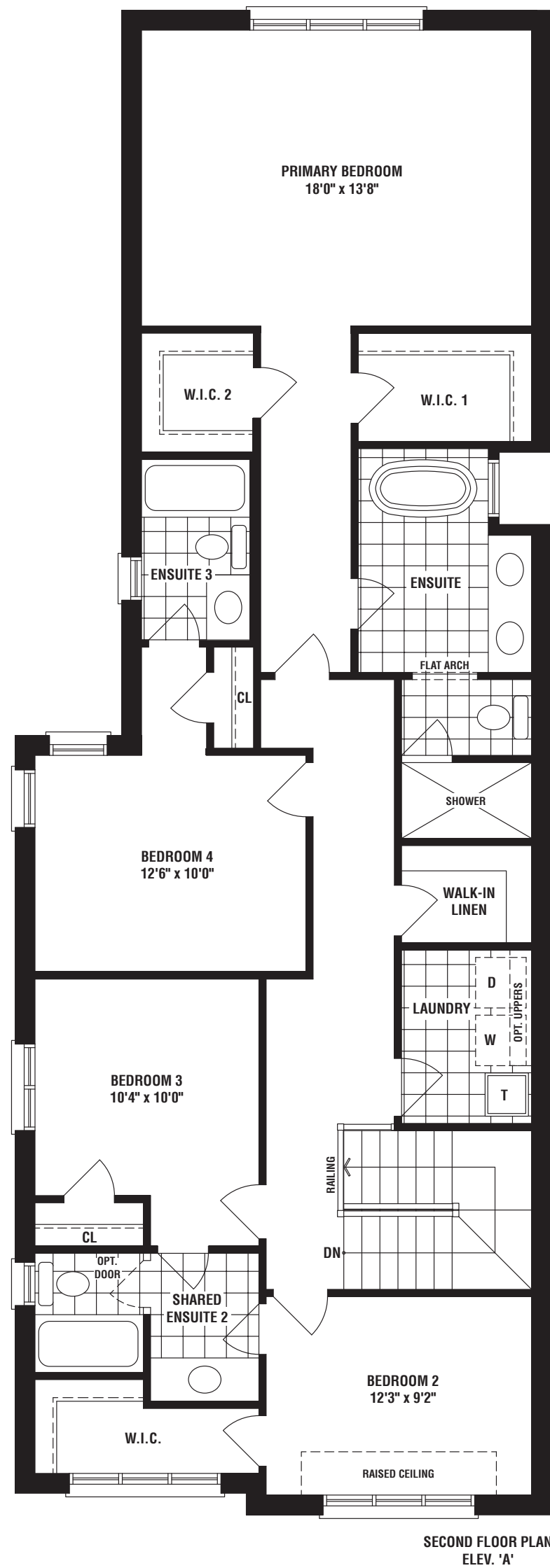
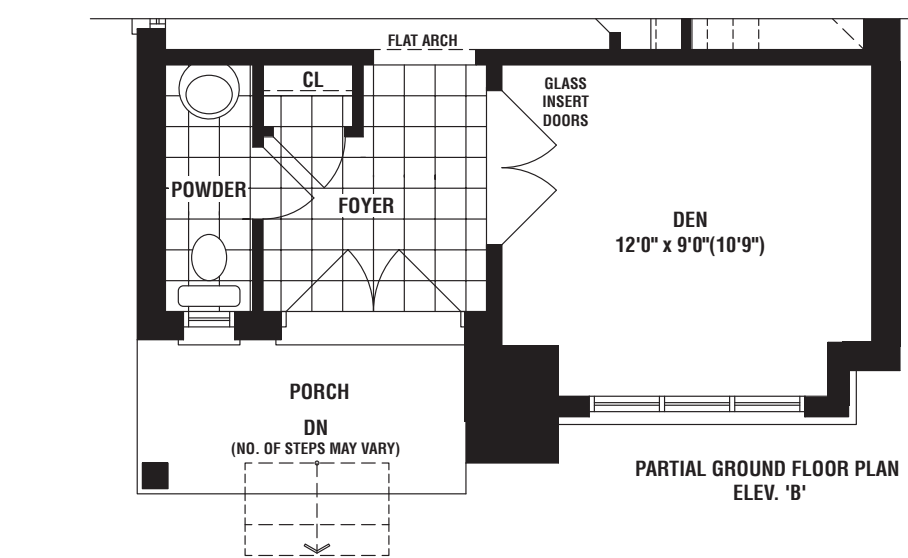
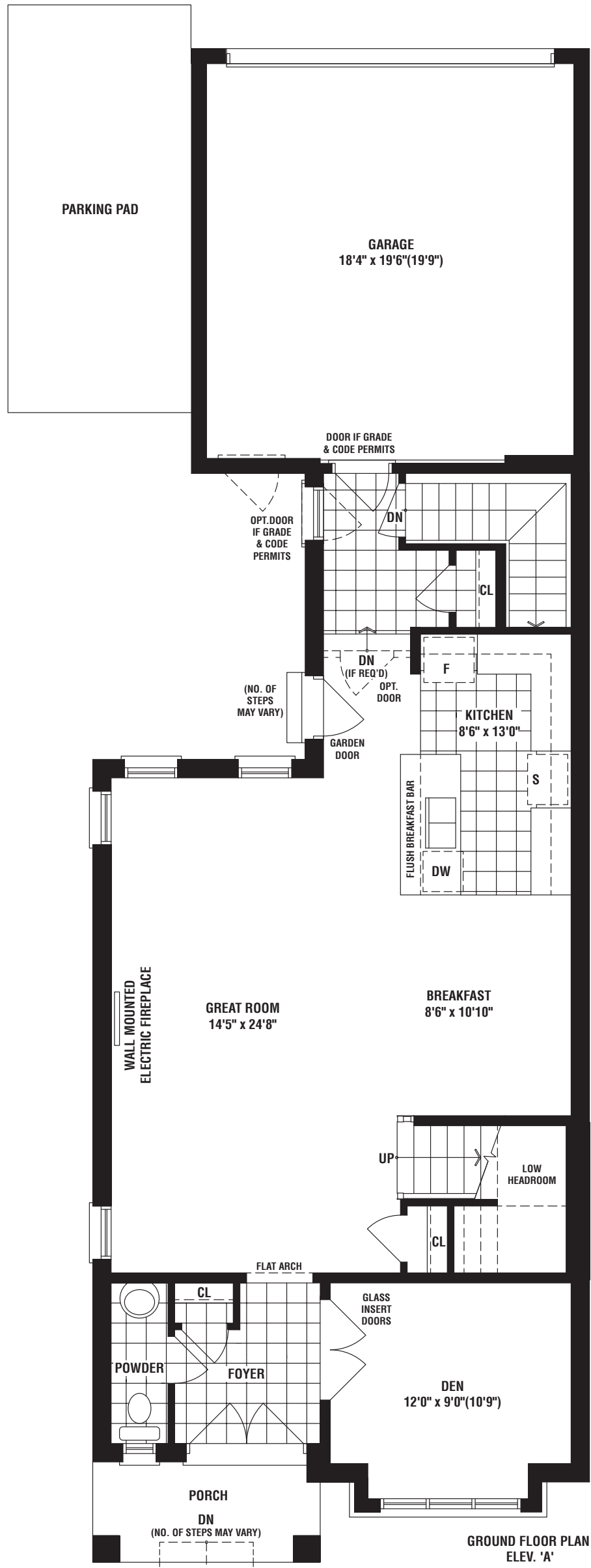


31' CITY SINGLES

BAYSIDE

ELEV A • 2652 SQ. FT. | ELEV B • 2669 SQ. FT.
 (NOT INCLUDING 857 (ELEV. A) / 862 (ELEV. B) SQ. FT. FINISHED BASEMENT)

31'
 CITY SINGLES



B



UPPER EAST SIDE
UNIONVILLE

COVESIDE

ELEV B • 2700 SQ. FT.



OVER 65 YEARS OF EXCELLENCE

31' CITY SINGLES

A



UPPER EAST SIDE
UNIONVILLE

COVESIDE

ELEV A • 2754 SQ. FT.



OVER 65 YEARS OF EXCELLENCE

31' CITY SINGLES

B



UPPER EAST SIDE
UNIONVILLE

PORTSIDE

ELEV B • 2742 SQ. FT.



OVER 65 YEARS OF EXCELLENCE

31' CITY SINGLES

A



UPPER EAST SIDE
UNIONVILLE

PORTSIDE

ELEV A • 2714 SQ. FT.



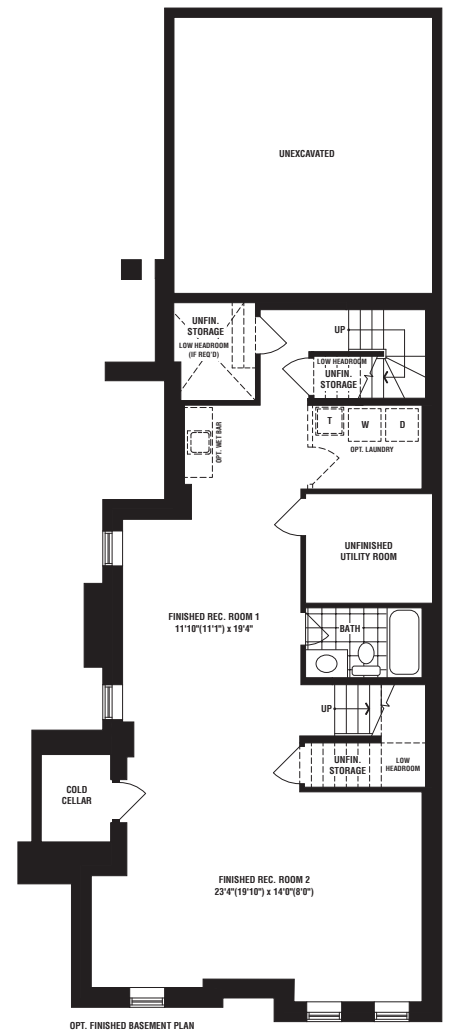
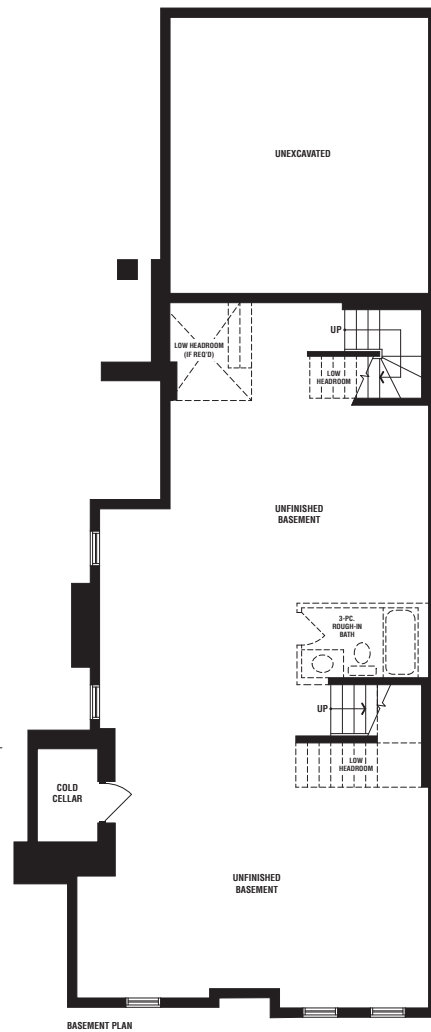
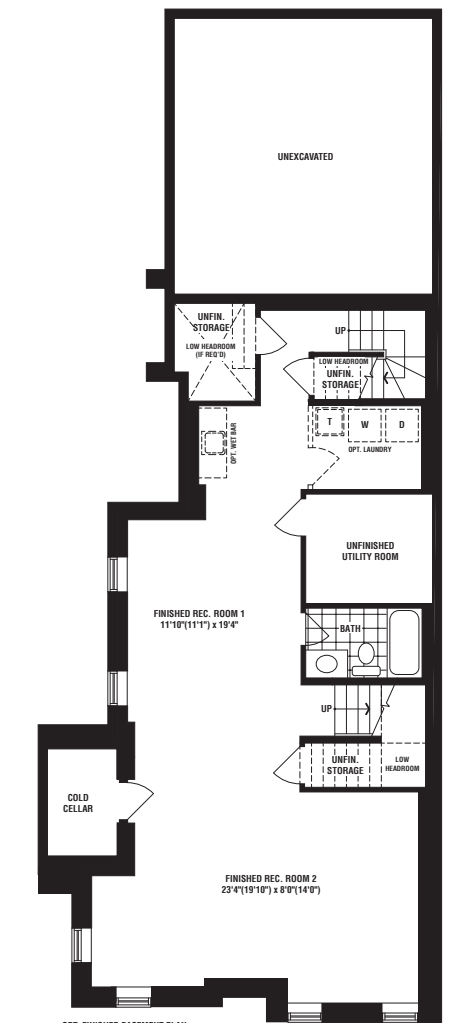
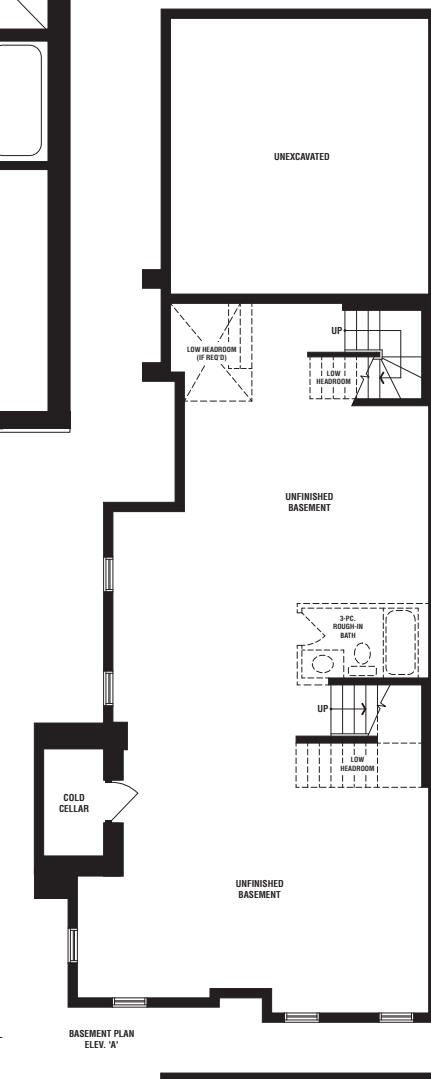
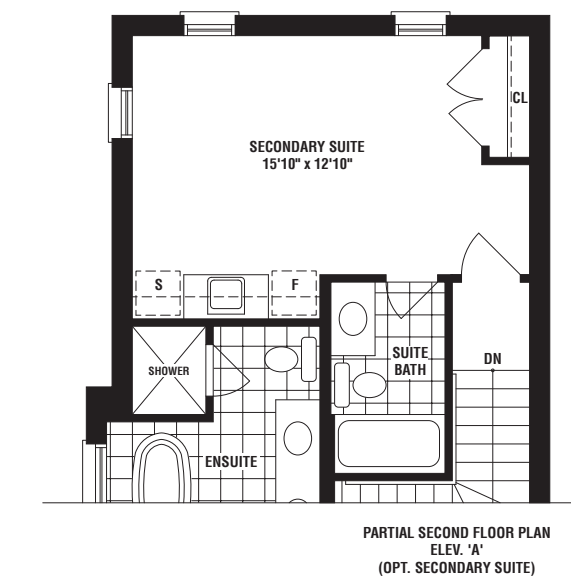
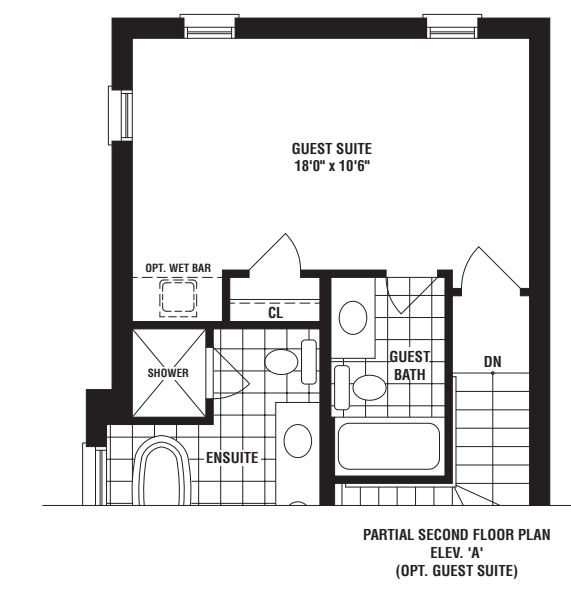
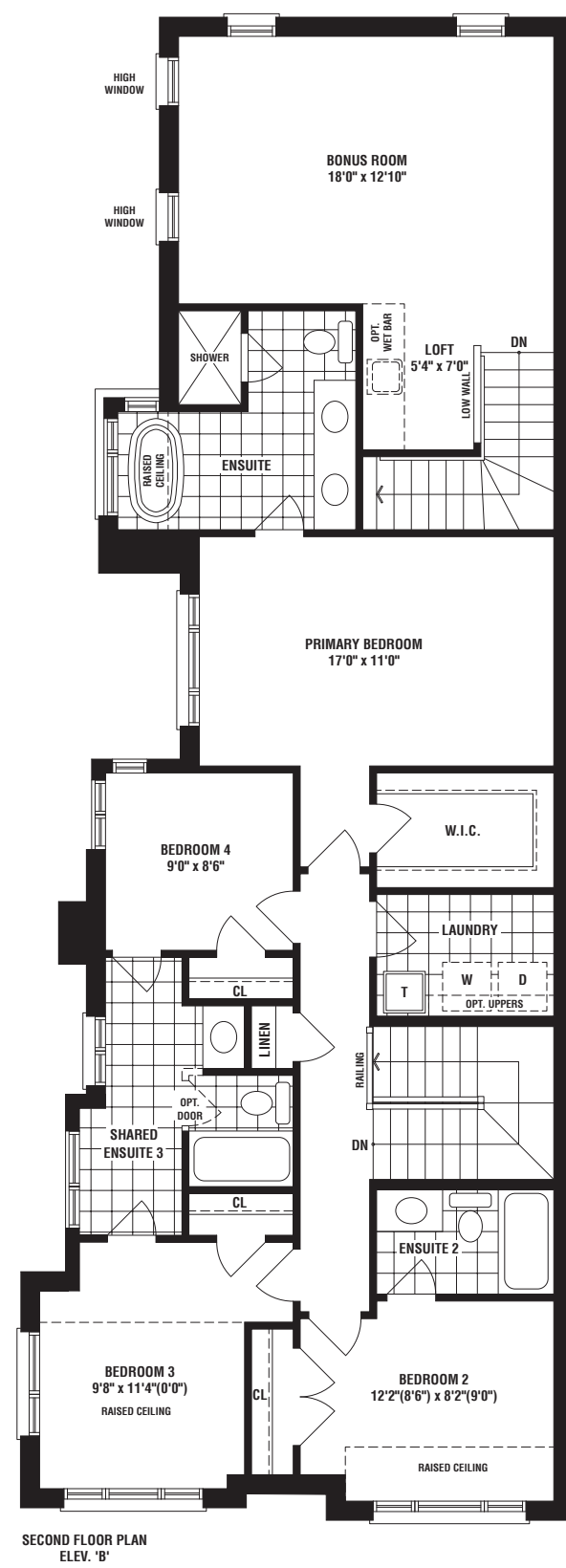
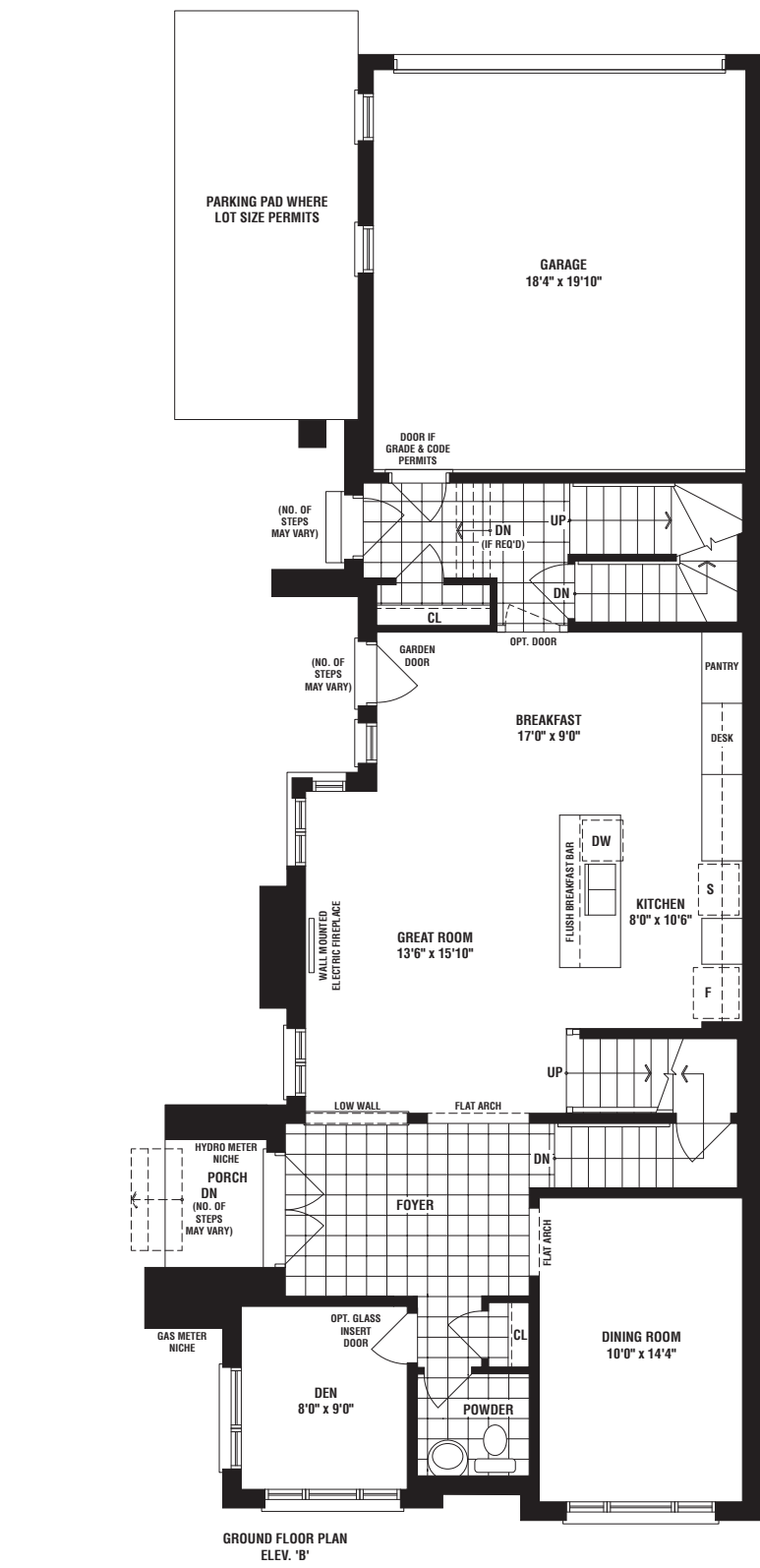
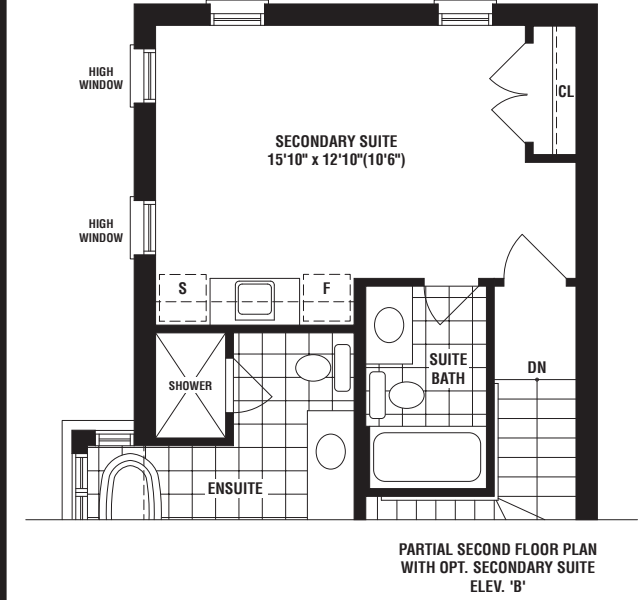
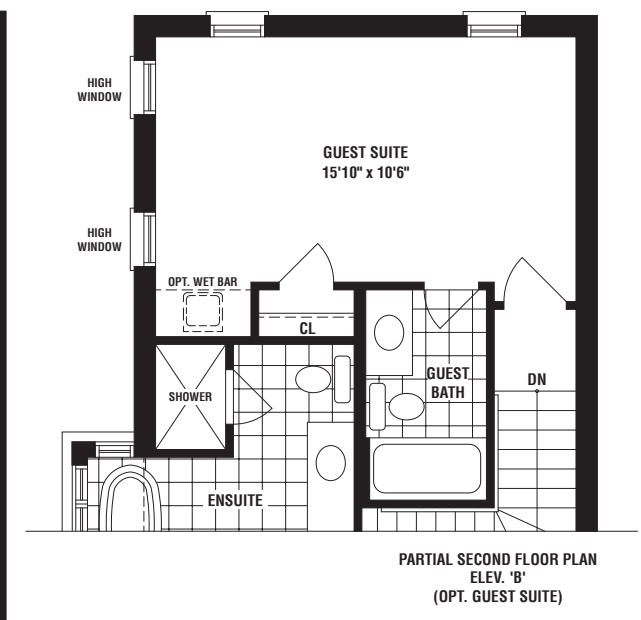
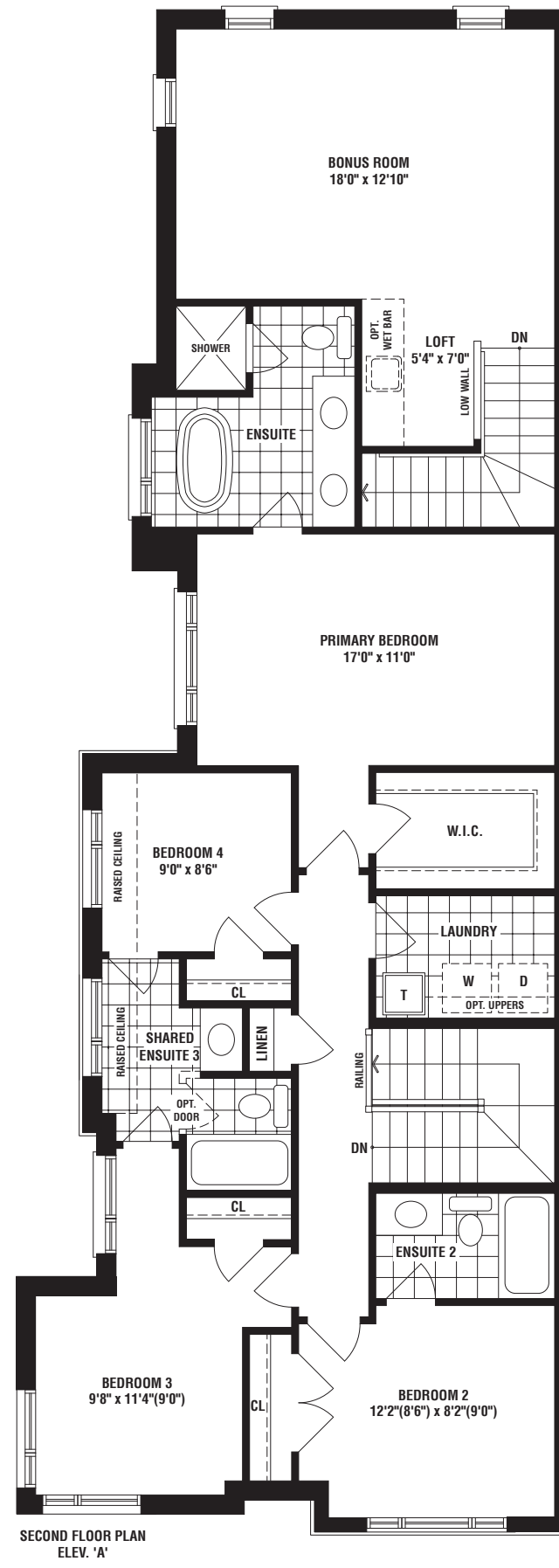
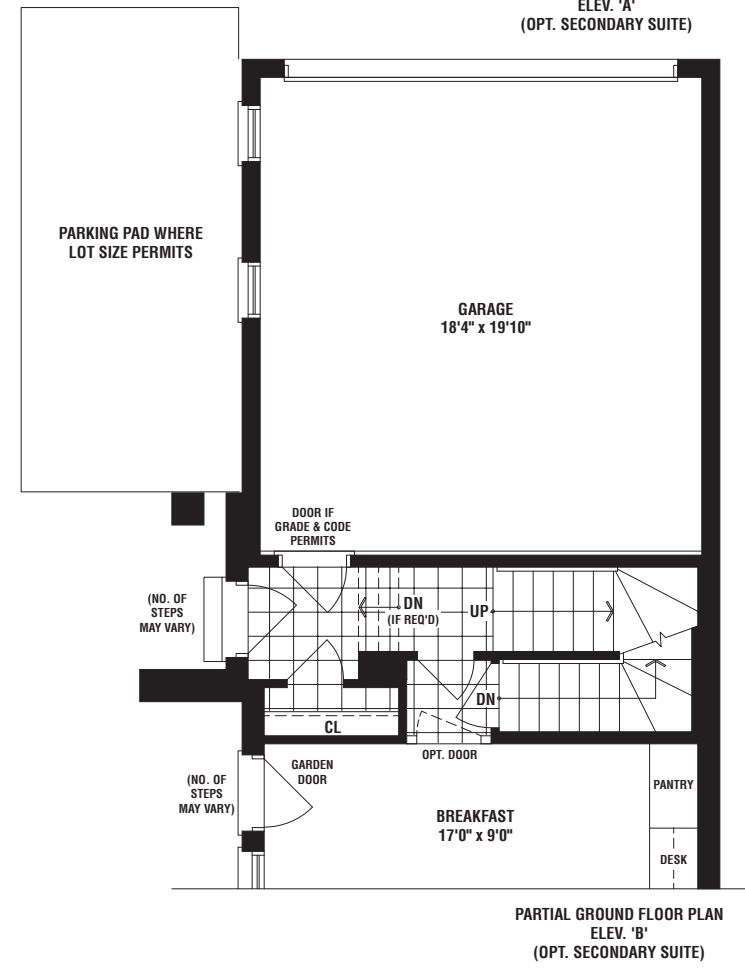
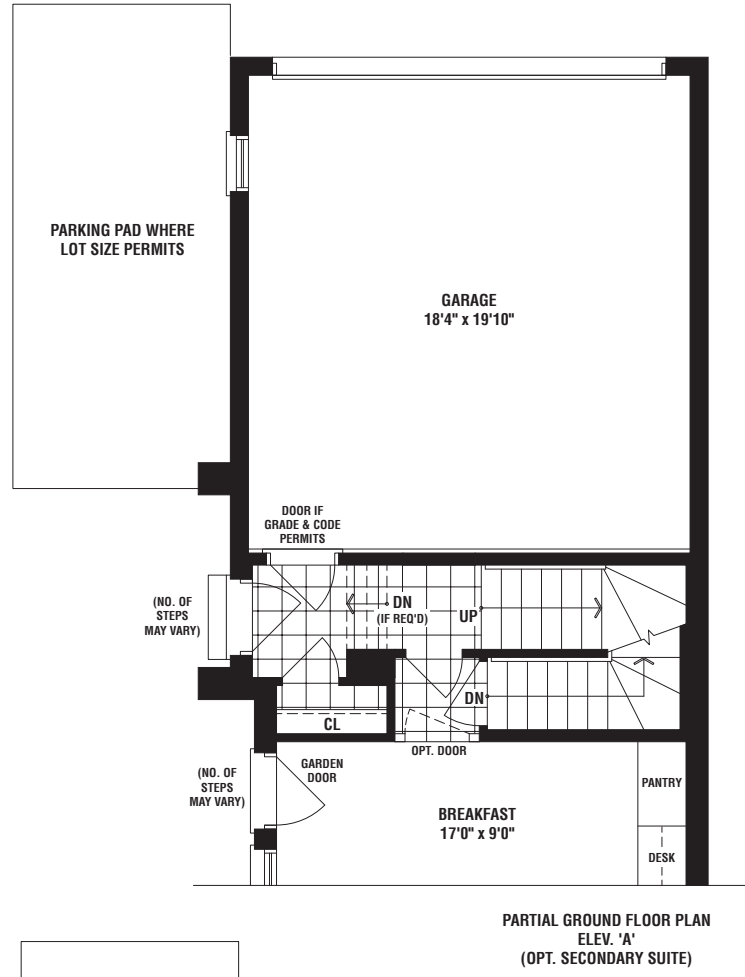
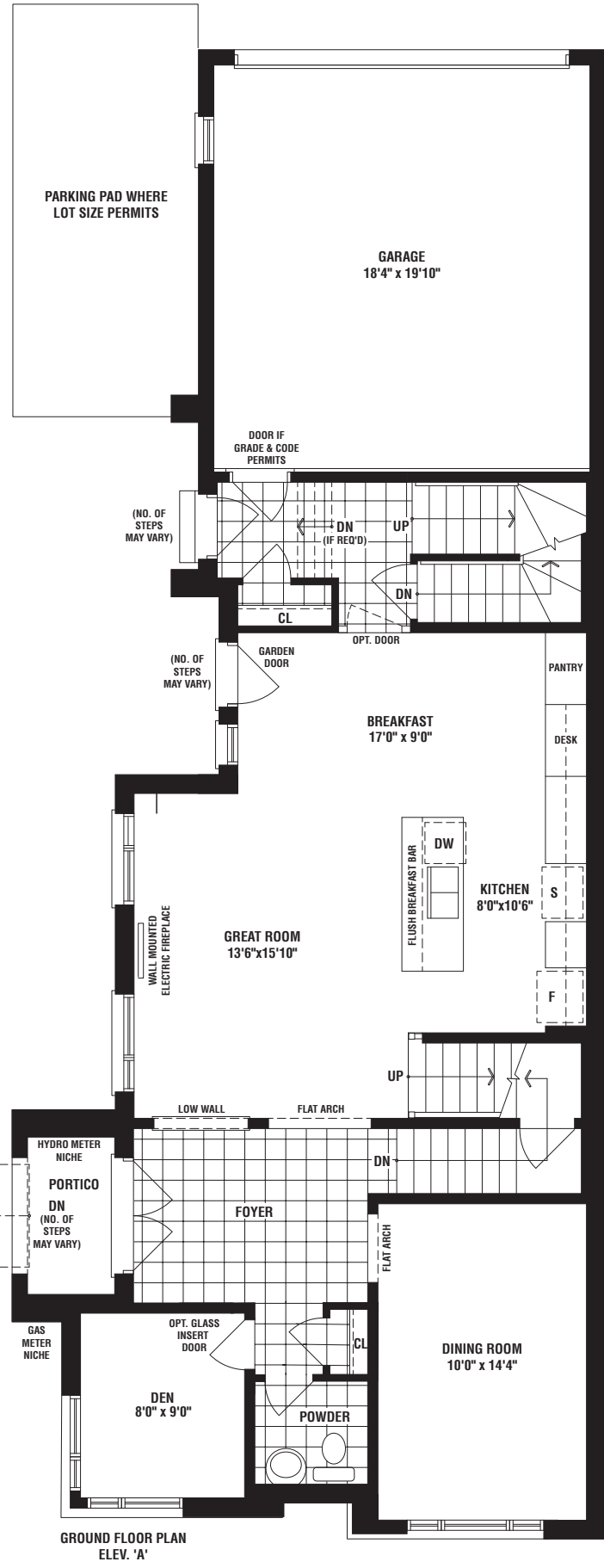
OVER 65 YEARS OF EXCELLENCE

31' CITY SINGLES

PORTSIDE

ELEV A • 2714 SQ. FT. | ELEV B • 2742 SQ. FT.
(NOT INCLUDING 888 (ELEV. A) / 881 (ELEV. B) SQ. FT. FINISHED BASEMENT)

31'
CITY SINGLES



The floorplans and elevations shown, dimensions, specifications and architectural detailing are pre-construction plans and may be revised or improved as necessitated by architectural controls and the construction process. All dimensions are approximate. Actual usable floor space may vary from the stated area. House may be reversed and Purchaser agrees to accept same. Specifications subject to change without notice. Number of steps and location may vary at any exterior entrance including walk-up and walk-out basements. Illustrations are Artist's concept. Exterior railings on plans only as required by grade. E. & O. E. 03/24 ARL31-4C



OVER 65 YEARS OF EXCELLENCE

FIELDGATEHOMES.COM

FIELDGATEHOMES.COM

UPPER EAST SIDE
UNIONVILLE

SHORESIDE

ELEV A • 3015 SQ. FT.



OVER 65 YEARS OF EXCELLENCE

31' CITY SINGLES

FIELDGATEHOMES.COM

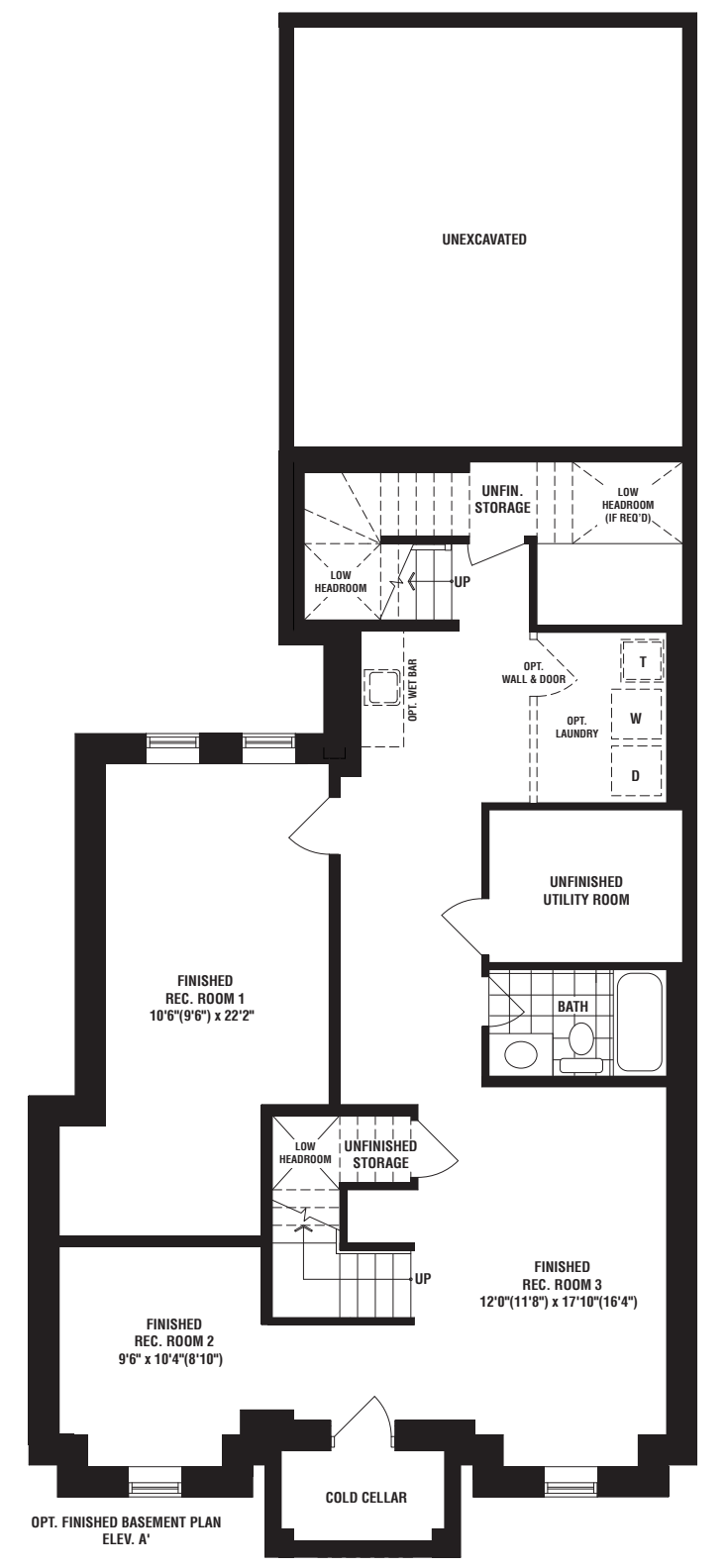
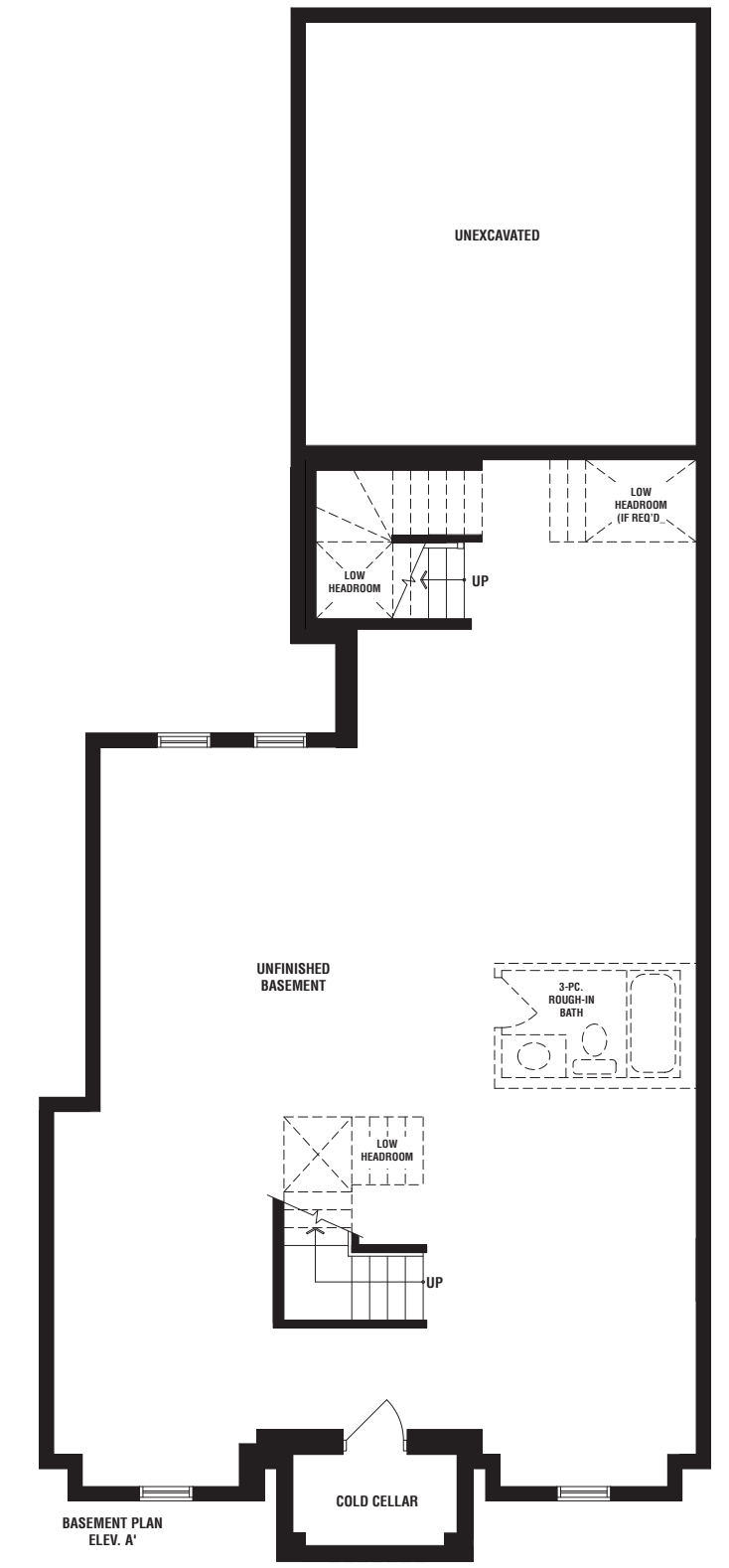
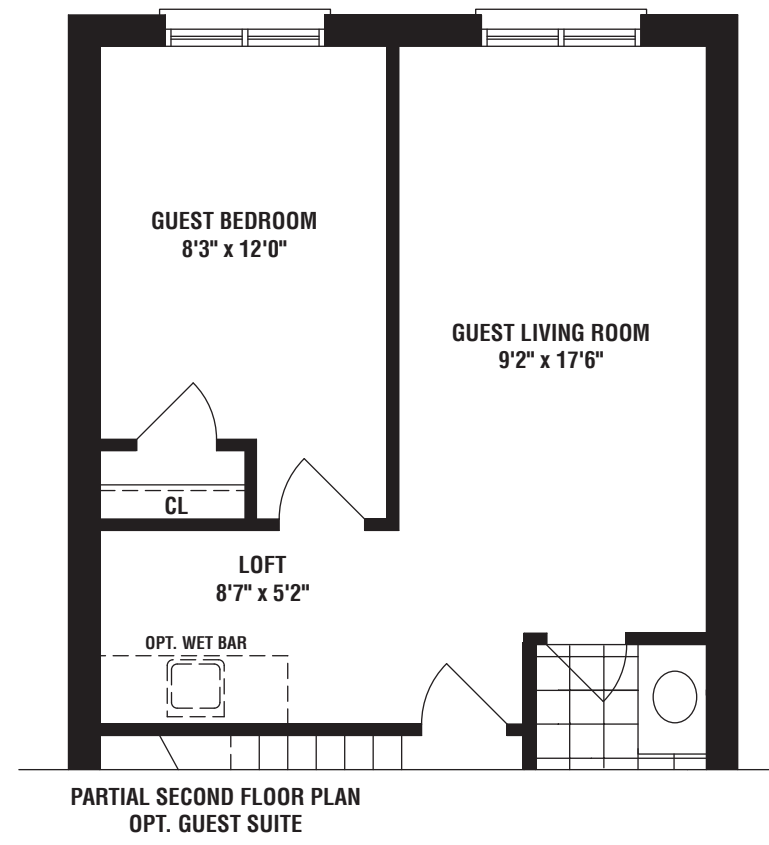
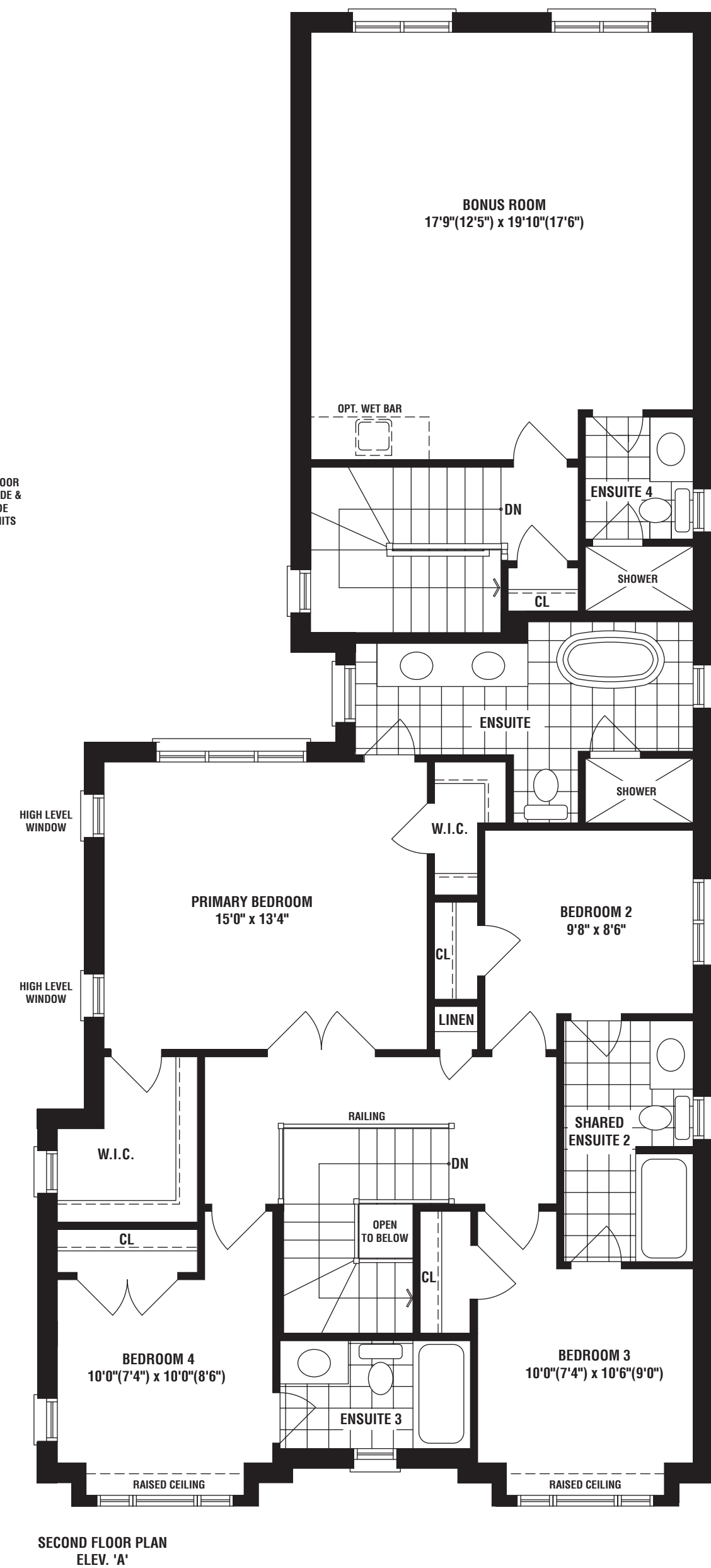
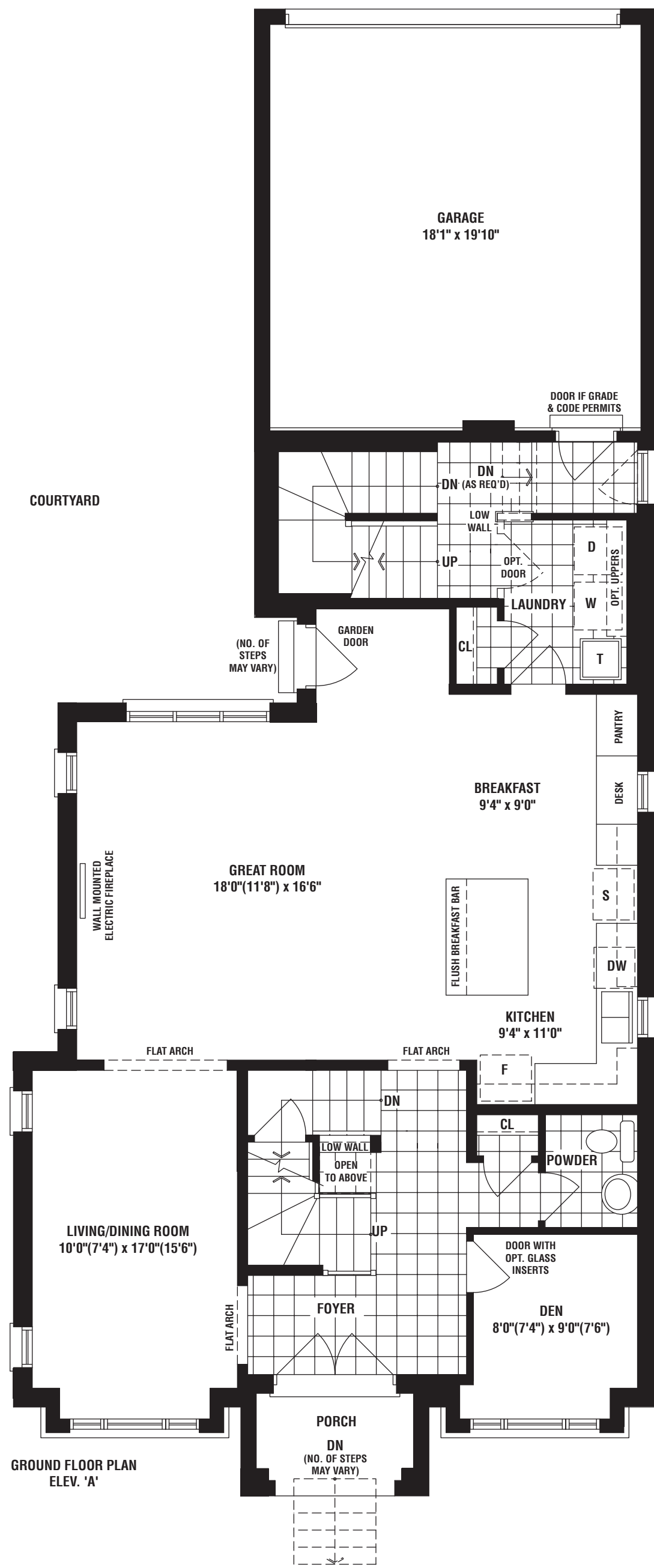


OVER 65 YEARS OF EXCELLENCE

SHORESIDE

ELEV A • 3015 SQ. FT.
(NOT INCLUDING 1046 SQ.FT. FINISHED BASEMENT)

31'
CITY SINGLES



The floorplans and elevations shown, dimensions, specifications and architectural detailing are pre-construction plans and may be revised or improved as necessitated by architectural controls and the construction process. All dimensions are approximate. Actual usable floor space may vary from the stated area. House may be reversed and Purchaser agrees to accept same. Specifications subject to change without notice. Number of steps and location may vary at any exterior entrance including walk-up and walk-out basements. Illustrations are Artist's concept. Exterior railings on plans only as required by grade. E. & O.E. 03/24 ARL31-5